



## **QUICK START GUIDE**

**Pro Qi Fast Wireless Car Charger  
FWC-03**



## Safety Notes:

---

1. Only use the product according to the instructions provided.
2. Do not disassemble the product, immerse it in water or expose it to open flames.
3. Do not use the product in high temperature, wet or corrosive environments.
4. Do not use the product in the immediate vicinity of heaters or other heat sources or in direct sunlight.
5. Ensure that there are no metal parts (for example, a magnetic metal holder plate) on the back of your device whilst charging. Metal can be heated up significantly by the charger and may cause damage to your device and/or the wireless charger.
6. Do not put cards with magnetic strips or chips (ID card, credit card etc.) close to the wireless charger to avoid demagnetization.
7. Keep the wireless charger at least 20 cm away from implanted medical devices, such as heart pacemakers.
8. Ensure that the wireless charger is clear of airbags, safety areas, controls, instruments, etc, and the driver's visibility is not blocked or restricted.
9. Keep the product out of the reach of children.

## How it works

---



1. Silicon mat
2. Adjustable side arms
3. Lever
4. Suction cup
5. Telescopic support pole
6. Telescopic knob
7. Pivot knob
8. Indicator lights
9. Foot
10. Auto-alignment coil

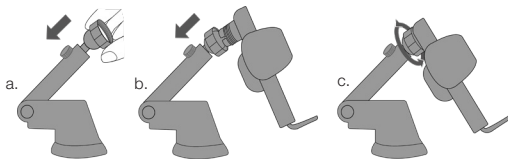


1. Touch button
2. Angle pivot knob
3. Tightening wheel
4. Air vent clip
5. USB-C charging port

# Mounting options

---

## 1. Mounting on suction cup



- Unscrew angle pivot knob from car charger. Put it over the ball joint adapter.
- Insert the ball into the socket of the charger in the back.
- Tighten the angle pivot knob.

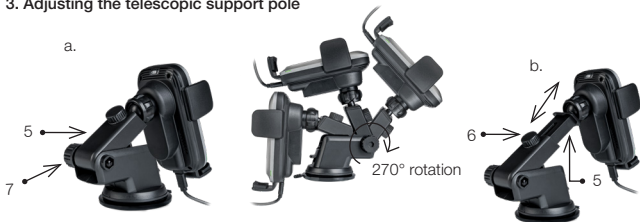
## 2. Mounting on a. Windscreen or b. Dashboard with suction cup



Before use of the suction cup holder please peel off the protective paper film off the suction cup.

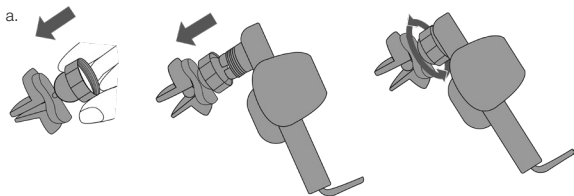
- Please clean the mounting area, lift the lever, push the suction cup firmly against the windscreen and press the lever to lock.
- Find a flat surface and clean the area, lift the lever, push firmly against the dashboard and press the lever to lock.

## 3. Adjusting the telescopic support pole

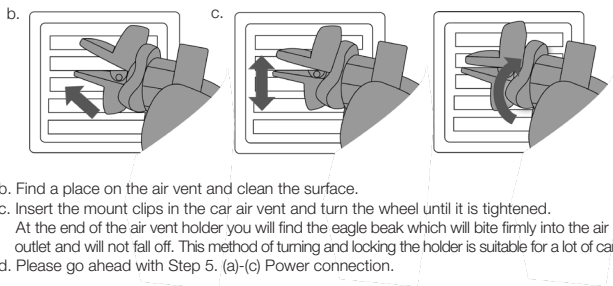


- By turning the pivot knob (7), the telescopic support pole (5) can be moved up/down. To fix the position, please tighten the pivot knob (7).
- By turning the telescopic knob (6), the telescopic support pole (5) can be extended. To fix the position please tighten the telescopic knob (6).

#### 4. Mounting on air vent



- a. Unscrew angle pivot knob from car charger and put it over the ball joint adapter. Insert the ball into the socket of the charger at the back and tighten the pivot knob.



- b. Find a place on the air vent and clean the surface.  
c. Insert the mount clips in the car air vent and turn the wheel until it is tightened.  
At the end of the air vent holder you will find the eagle beak which will bite firmly into the air outlet and will not fall off. This method of turning and locking the holder is suitable for a lot of cars.  
d. Please go ahead with Step 5. (a)-(c) Power connection.

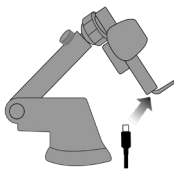
#### Note

- Confirm your car's air vents are compatible before purchasing.
- 5V / 1A car chargers are not sufficient to power the Verbatim Qi Fast Wireless Car Charger.
- A Quick Charge 3.0 car charger adapter (not included) or a QC 3.0 USB port in your car is required for Fast Charge Mode.
- Metal attachments, Pop sockets, or credit cards will interfere with charging. Cases which contain metal will trigger foreign object detection and interrupt charging.
- Please note that your device/smartphone needs to be compatible to Qi Standard, min. 5W.
- Fast Wireless Charging supported with 7.5 W to 15 W (power varies between manufacturers of your device/smartphone).

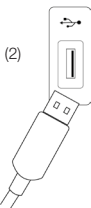
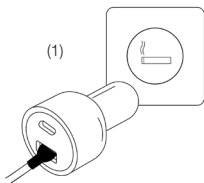
## Power connection

---

### 5. Power connection



a. Plug the included USB-C cable into the wireless car charger port.



b. For fast charging you need a QC 3.0 adapter (not included) or a QC 3.0 capable USB-A charging port in your car. If using an adapter connect it to the lighter plug (1) and connect the USB-A end of the cable to the adapter. If a USB-A charging port (2) is available you can use it directly.



c. Touch the button in the top back and place your phone in the car charger, the charger will start auto aligning by moving the coil of the charger up and down to find the best charging position. Charging will start automatically when the best spot is found (if supported by the phone), the auto aligning process might take some time.

## Indicator LED info

<b>Working mode:</b>	Green (on both sides)
<b>Standby mode:</b>	Green (on both sides)
<b>Charging mode:</b>	Blue (on both sides)
<b>Charge complete:</b>	LED will switch from blue to green (on both sides)
<b>Foreign object detection warning:</b>	If metal or magnetic objects are somewhere on the charger, the LED will flash green and blue. If foreign objects are detected, charging will be stopped.

Standby   
Charging 



## 6. Inserting/removing phone

After you mounted the holder and the car charger is provided with power you can insert your phone, the arms will close automatically. The phone will automatically start charging (if the smartphone supports Qi). The green status LED on both sides will switch to blue. If you want to open the arms while the device is charging and connected to power supply, you need to touch the button on the top back. After touching the button, the arms will release your phone so you can take it out.

**CAUTION:** Never use force to open or close the arms manually as the product is designed to open and close automatically. Manual adjustment might damage the device.

## Specifications

Input (requirements for adapter):	9V/1.67A; 12V/1.5A-3A
Output:	15W / 10W / 7.5W / 5W (auto-adaptation)
Working frequency:	110 KHz-205KHz
Product standard:	Qi
Charging distance:	≤10mm
Charging efficiency:	≤80%
Product dimension:	123mm x 71mm x 75mm
Product material:	ABS + PC + Glass Surface
Product weight:	176g
Cable:	USB-C to USB-A cable, 1m
Protective functions:	Over-voltage protection / Over-current protection Over-temperature protection / Short circuit protection FOD (foreign object detection)
NPO capacitors:	Lower charging temperature and high charging efficiency

## Limited Warranty Terms

---

Verbatim GmbH warrants this product to be free from defects in material and workmanship for a period of 2 years from date of purchase. This warranty excludes batteries. If this product is found to be defective within the warranty period, it will be replaced at no cost to you. You may return it with your original cash register receipt to the place of purchase or contact Verbatim. Product replacement is your sole remedy under this warranty, and this warranty does not apply to normal wear or to damage resulting from abnormal use, misuse, abuse, neglect or accident, or to any incompatibility or poor performance due to the specific computer software or hardware used. VERBATIM WILL NOT BE LIABLE FOR DATA LOSS OR ANY INCIDENTAL, CONSEQUENTIAL OR SPECIAL DAMAGES, HOWEVER CAUSED, FOR BREACH OF WARRANTIES OR OTHERWISE. This warranty gives you specific legal rights and you may also have other rights which vary from state to state or country to country.

### Note

---

Verbatim GmbH may at any time revise the content of this user guide without further notice.

### Rights

---

Copyright © 2022 Verbatim GmbH. No part of this document may be reproduced in any form or by any means, for any purpose, without the express written permission of Verbatim GmbH. All rights reserved. All other brands and product names referenced herein are property of their respective owners.

### CE Declaration

---

Complies with the requirements set out in the Council Directive on the Approximation of the Laws of the Member States relating to Electromagnetic Compatibility (2014/30/EC) and General Product Safety Directive (2001/95/EC). This declaration applies to all specimens manufactured identical to the model submitted for testing/evaluation.

ETSI EN 301 489-1 V2.2.3 (2019-11)

ETSI EN 301 489 V2.3.0 (2022-07)

EN 55032:2015/A11:2020

EN 55035:2017/A11:2020

### RoHS Compliance

---

This product is in compliance with Directives 2011/65/EU and 2015/683 of the European Parliament and of the Council of 18th December 2006, on the restriction of the use of hazardous substances in electrical and electronic equipment (RoHS) and its amendments. Substances of Very High Concern (SVHC) including 224 substances contained in Candidate List of June 10th 2022 are not present in this product range above permitted levels.

### WEEE Notice

---

The Directive on Waste Electrical and Electronic Equipment (WEEE), which entered into force as European law on 13th February 2003, resulted in a major change in the treatment of electrical equipment at end-of-life.

The WEEE logo (shown at the left) on the product or on its box indicates that this product



must not be disposed of or dumped with your other household waste. For more information about electronic and electrical waste equipment disposal, recovery, and collection points, please contact your local municipal household waste disposal service or shop from where you purchased the equipment.



## Triman (Only for France)



The product and packaging materials are recyclable, dispose of it separately for better waste treatment. The Triman logo is valid in France only.



Cet appareil, ses accessoires et câbles se recyclent.  
A déposer au magasin A DÉPOSER au magasin  
Points de collecte sur [www.qualitechirurgie.com](http://www.qualitechirurgie.com)  
Principes d'organisation de la loi de votre appareil !

## Technical Support

- EN** If you have any questions about this product, please contact the Verbatim support team – [www.verbatim.com/support](http://www.verbatim.com/support).
- F** Si vous avez des questions au sujet de ce produit, contactez l'équipe d'assistance Verbatim à l'adresse [www.verbatim.com/support](http://www.verbatim.com/support).
- DE** Wenn Sie Fragen zu diesem Produkt haben, wenden Sie sich bitte an den Verbatim-Support: [www.verbatim.com/support](http://www.verbatim.com/support).
- NL** Voor vragen over dit product kunt u contact opnemen met het ondersteuningsteam van Verbatim - [www.verbatim.com/support](http://www.verbatim.com/support).
- IT** Per maggiori informazioni su questo prodotto, contattare il Supporto Tecnico di Verbatim – [www.verbatim.com/support](http://www.verbatim.com/support).
- ES** Si tiene alguna pregunta sobre este producto, póngase en contacto con el equipo de soporte de Verbatim: [www.verbatim.com/support](http://www.verbatim.com/support).
- PT** Caso tenha alguma dúvida sobre este produto, entre em contacto com a equipa de apoio da Verbatim - [www.verbatim.com/support](http://www.verbatim.com/support).
- PL** W przypadku jakichkolwiek pytań na temat tego produktu prosimy o kontakt z działem wsparcia firmy Verbatim — [www.verbatim.com/support](http://www.verbatim.com/support).
- RU** Если у вас есть какие-либо вопросы об этом продукте, обратитесь в службу технической поддержки Verbatim по адресу [www.verbatim.com/support](http://www.verbatim.com/support).
- CZ** Máte-li k tomuto produktu nějaké otázky, kontaktujte tým podpory společnosti Verbatim – [www.verbatim.com/support](http://www.verbatim.com/support).
- HU** Ha bármilyen kérdése van a termékkel kapcsolatban, kérjük, lépjen kapcsolatba a Verbatim ügyfélszolgálatával: [www.verbatim.com/support](http://www.verbatim.com/support).
- HR** **SR** Če imate vprašanja glede izdelka, se obrnite na skupino za podporo strankam Verbatim – [www.verbatim.com/support](http://www.verbatim.com/support).
- SK** Ukoliko vas zanima bilo šta u vezi ovog proizvoda, obratite se timu za podršku kompanije Verbatim – [www.verbatim.com/support](http://www.verbatim.com/support).
- RO** Dacă aveți întrebări despre acest produs, vă rugăm să contactați echipa de asistență Verbatim - [www.verbatim.com/support](http://www.verbatim.com/support).
- TR** Bu ürünle ilgili herhangi bir sorunuz varsa, lütfen Verbatim destek ekibi ile iletişime geçin – [www.verbatim.com/support](http://www.verbatim.com/support).

EUROPE/MIDDLE EAST/AFRICA:

Verbatim GmbH, Düsseldorfer Straße 13, 65760 Eschborn, Germany

 Verbatim.

Verbatim QSG 49554 Pro Qi Fast Wireless Charger FWC-03 EN Rev. 22-11